

Sprint™ by Benchmark

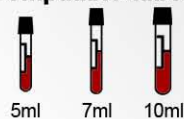


Clinical Centrifuges

Swing out models

Sprint™ 6H

Compatible tubes



The Sprint™ 6H is a compact centrifuge that includes a six position, swing-out rotor. Prior to centrifugation, tubes are loaded vertically. Once the centrifuge starts, tubes swing to a **horizontal** position, providing the flat-line separation that is commonly preferred for further analysis.

Designed for use with 10ml tubes (16 x 100mm), smaller tubes (12 x 75mm and 12 x 100mm) can be centrifuged using the optional adapters (item: C3100-ADP).

With intuitive controls and a large LED display, virtually no programming or setup is required prior to starting a cycle. Simply select the run time and press "START". The safety lid-lock is engaged and the rotor quickly and smoothly accelerates to 3,400 rpm. Once the run time is completed (or the "STOP" button is pressed) the rotor comes to a complete stop and the lid lock is disengaged for removal of samples.

Item: C5000-6H*
Sprint 6H Centrifuge with 6 x 10ml swing-out rotor for horizontal separation
*item is 120V, to order 230V add (-E) to item number

Item: C5000-ADP
Optional adapters for above, accepts 5-7ml tubes, 6/pk



6 x 10ml Horizontal (1600xg)

Ideal for Coag, PPP and urinalysis studies



Speed: 3,400rpm / 1,600 xg
Capacity: 6 x 10ml
6 X 5-7ml (adapters required)
Timer: 1 to 99 mins.
Dimensions: 12.8 x 11.5 x 9 in.
(W x D x H) (32.5 x 29.3 x 23 cm)
Weight: 17.6 lbs / 8 kg
Electrical: 120 or 230V, 50-60 Hz,
Warranty: 2 years

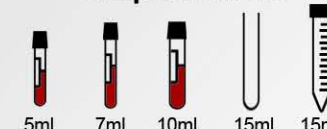


6 position swing out rotor

Fixed angle models

Sprint™ 8

Compatible tubes



The Sprint™ 8 includes an eight position, fixed angle rotor for the centrifugation of 10ml blood tubes (16 x 100mm), and 15ml conical tubes (17 x 120mm). Smaller blood tubes (12 x 75mm and 12 x 100mm) are also compatible with the use of optional adapters (C3100-ADP).

With intuitive controls and a large LED display, virtually no programming or setup is required prior to starting a cycle. Simply use the up/down buttons to select the run time and press "START". The safety lid-lock is engaged and the rotor quickly and smoothly accelerates to 3,400 rpm. Once the run time is completed (or the "STOP" button is pressed) the rotor comes to a complete stop and the lid lock is disengaged for removal of samples.

Ideal for Coag, PPP and urinalysis studies.

Item: C5000-8*
Sprint 8 Centrifuge with 8 x 15ml fixed angle rotor
*item is 120V, to order 230V add (-E) to item number

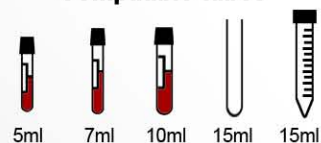
Item: C5000-ADP
Optional adapters for 10/15ml rotors, accepts 5-7ml tubes, 6/pk



8 x 15ml (1600xg)

Speed: 3,400rpm / 1,400 xg
Capacity: 8 x 15ml
8 X 5-7ml (adapters required)
Timer: 1 to 99 mins.
Dimensions: 12.8 x 11.5 x 9 in.
(W x D x H) (32.5 x 29.3 x 23 cm)
Weight: 17.6 lbs / 8 kg
Electrical: 120 or 230V, 50-60 Hz,
Warranty: 2 years

Compatible tubes



Sprint™ 6H Plus



The Sprint™ 6H PLUS is our premium centrifuge offering providing horizontal (swing-out) centrifugation:

- Increased speed up to **4,000rpm / 2504xg**
- Back-lit, liquid crystal display
- Adjustable speed in increments of 100rpm
- Digital speed control in rpm or rcf
- Adjustable acceleration and deceleration levels
- A safety imbalance detection system
- Momentary operation
- High capacity rotor for tubes up to 15ml (conical or round bottom)



6 x 15ml Horizontal (2504xg)

In addition, the Sprint 6H PLUS offers an optional fixed-angle rotor for centrifugation of up to 12 tubes.

Ideal for Coag, PPP and urinalysis studies

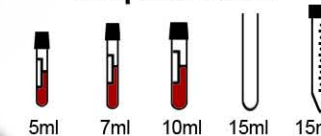
Item: C3303-6HP* Sprint 6H Plus Centrifuge
*item is 120V, to order 230V add (-E) to item number

Item: C3303-1215
Optional 12 Position fixed angle rotor

Item: C3100-ADP
Optional adapters for 10/15ml rotors, accepts 5-7ml tubes 8/pk

Speed: 100 to 4,000rpm / 2504 xg
Capacity: 6 x 15ml / 10ml / 7ml / 5ml
Timer: 1 to 99 mins. / cont.
Dimensions: 12 x 16 x 10.5 in.
(W x D x H) (30.5 x 40.6 x 26.7 cm)
Weight: 21 lbs / 9.5 kg
Electrical: 120 or 230V, 50-60 Hz,
Warranty: 2 years

Compatible tubes



Sprint™ 8 Plus



8 position fixed angle rotor

8 x 10/15ml (4445xg)

Speed: 100 to 6,800rpm / 4,445 xg
Capacity: Round: 8 x 15ml / 10ml / 7ml / 5ml
Conical: 4 x 15ml conical up to 99hr. 59 mins. / cont.
Timer: 1 to 99 hrs. 59 mins. / cont.
Dimensions: 11 x 13.7 x 9.5 in.
(W x D x H) (28 x 35 x 24 cm)
Weight: 17.6 lbs / 8 kg
Electrical: 120 or 230V, 50-60 Hz,
Warranty: 2 years

Unlike traditional clinical centrifuges the increased speed capability (4445xg) of the Sprint™ 8 PLUS allows for the separation of serum or plasma in as little as 2-3 minutes. Additional features include:

- A large back-lit, liquid crystal display
- High capacity rotor, 8 tubes up to 15ml (conical or round bottom)
- Unique EZ-Scroll™ touch pad
- Timer up to 99hr 99mins. / continuous
- Storage of commonly used run-times
- Control of speed in in both rpm and rcf
- Adjustable acceleration and deceleration levels
- Safety imbalance detection system
- Momentary operation
- Electrical lid lock

Ideal for rapid production of serum and plasma

Item: Z207-A*
Sprint 8 Plus Centrifuge with 8 x 15/10ml fixed angle rotor
*item is 120V, to order 230V add (-E) to item number

Item: Z326-15-A5
Optional adapters for 5ml tubes, 2/pk
Item: Z326-15-A7
Optional adapters for 7ml tubes, 2/pk

Sprint™

by **Benchmark**

selection guide



Model	Sprint 6H	Sprint 6H Plus	Sprint 8	Sprint 8 Plus
Rotor type	Swing Out		Fixed Angle	
Max Speed	3,400 rpm	4,000 rpm	3,400 rpm	6,800 rpm
Max RCF	1,600 xg	2,850 xg	1,600 xg	4,445 xg
Adjustable speed	Fixed	Adjustable	Fixed	Adjustable
Capacity	6 x 10ml 6 x 5/7ml	6 x 15ml 6 x 10ml 6 x 5/7ml	8 x 15ml 8 x 10ml 8 x 5/7ml	8 x 15ml round 8 x 10ml 8 x 5/7ml 4 x 15ml conical
Timer	0 to 99min.	1 to 99min., cont.	0 to 99min.	0 to 99hr 59min, cont.

Also available:

MC-24™ Touch
High Speed Microcentrifuge



HERMLE
Benchmark



PO Box 709 Edison, NJ 08818
 Phone: 908-769-5555 Fax: 732-313-7007
 Web: www.BenchmarkScientific.com
 Email: Info@BenchmarkScientific.com